

**3 NEW SIZES**  
**FROM 1ST SEPTEMBER**

**VELUX®**

# World-leading skylights and roof windows

Product information and price list

1st July 2022



**VELUX  
ACTIVE**

**SOLAR-POWERED  
SKYLIGHTS**

**STREAMLINED  
EXTERIOR**



**Australia's only  
Skylight with CodeMark**



**CODEMARK®**  
**Australia**  
30089/30090/30091

**CodeMark  
CERTIFIED**

**HAIL  
TESTED**

**BUSHFIRE  
BAL40**

**CYCLONE  
TESTED**



**20+ Videos**  
**VELUX Australia**

Throughout the construction industry, VELUX is a by-word for quality, a reputation that has been painstakingly built up for more than 35 years in Australia and for over 80 years around the world.

Perfectly designed to withstand the world's harshest climatic conditions, all VELUX products are of the highest quality and will perform superbly for a lifetime of faultless service.



Take a look through this guide and judge for yourself. For range, quality, value, guarantees, delivery and service – VELUX is a world leader.

## Guaranteed to last...

**10 Year Warranty**  
on all skylights, roof windows and flashings.

**3 Year Warranty**  
on accessories, including electric controls & blinds.



CodeMark® is a voluntary certification scheme owned by the Commonwealth of Australia that provides legally binding evidence of compliance to the National Construction Code of Australia. One certificate replaces dozens of technical papers.

### Surpasses Australian tests for skylights

<p>AS4285 SKYLIGHTS</p> <p>Cyclonic† &amp; Non-Cyclonic</p>	<p>AS1288 OVERHEAD GLAZING</p> <p>Laminated inner pane</p>	<p>AS3959 BUSHFIRE*</p> <p>Attack Level 40</p>
---	--	--

### Window Energy Rating Scheme (WERS)

(MAXIMUM 5 ON WERS SUMMER RATING)



VELUX Skylights and Roof Windows are included in the National Energy Rating programme (AccuRate) as well as state run programmes such as Basix & FirstRate.

#### Building Code compliance

All VELUX Skylights/Roof Windows (except Sun Tunnels) are deemed non-combustible and thereby comply with NCC Boundary Separation requirements i.e. suitable for use within 900mm of a boundary for buildings of Class 1 & 10 (typical residential dwelling)\*.

\* CSIRO assessment report available on request. VELUX recommends consultation with relevant authority before work commences. Opening models assessed in closed position.

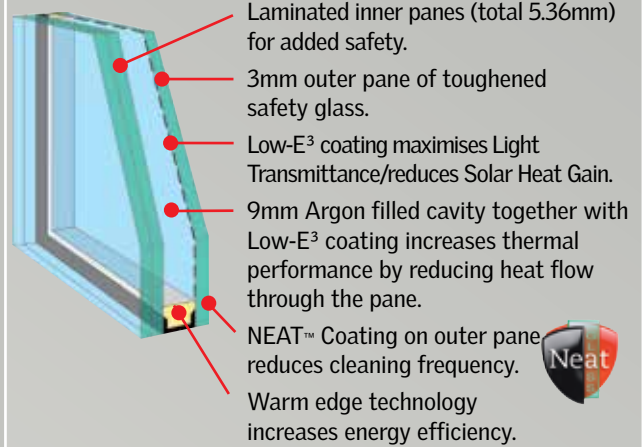
^ Skylight product range only. Custom-made flashing required. Tested in closed position, fire resistant mesh may be required for opening models. Rigid Sun Tunnel BAL29. Please consult your local council.

† Except GPL Roof Window and Sun Tunnel. VCS/VCM cyclone test not performed with screws provided, installation requires the use of #8 roofing screws.

## Glazing

### High Performance Double Glazing

Standard across entire skylight range



#### Benefits:

- Radiant heat block: Complete window **approx 75%**
- UV Harmful rays block **approx 99%**
- Noise reduction factor **32 decibels**
- WERS rating **5 stars**
- Double layer of Low-E<sup>3</sup> coating.
- 10 year warranty on insulated glass seal.
- Reduced cleaning frequency.

#### Australian Standard AS1288

Laminated glass (standard) must be used for skylights installed 3m or more above floor level.

### NEAT™ Photocatalytic Coating

- Silicone Dioxide/Titanium Dioxide coating reacts with the sun's UV rays to decompose surface organic dirt before rinsing away with the next shower of rain, thereby reducing cleaning frequency.
- The coating also makes the glass surface smoother, so water disperses evenly, sheets off and evaporates quickly; thereby minimising water spotting on the pane.

GGL/GPL window pane tint (i.e. colouration) is slightly different to skylight window pane tint.

## Measure & Quote

VELUX has recommended installers throughout the country that are trained to install VELUX skylights. Scan the QR code below and complete the online webform when you're ready to take the next step, and we'll arrange for a recommended installer in your area to provide a Measure & Quote.



Installers recommended by VELUX are independent contractors who have been trained in the installation of VELUX products but are not employed by VELUX Australia. VELUX cannot be held responsible for work carried out on your property by installers who are independent of VELUX Australia.

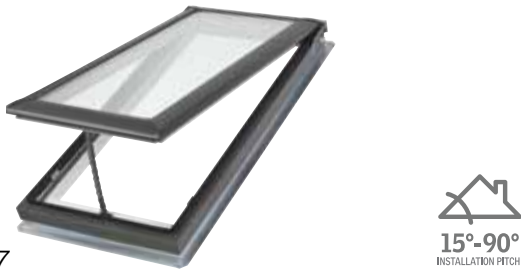
## Pitched Roof Skylights

**VSS** Solar-powered



Page 5

**VS** Manually operated



Page 7

**FS** Fixed (non-opening)



Page 9

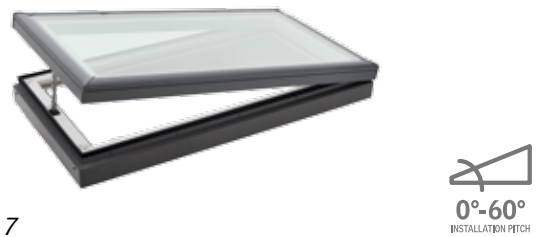
## Flat Roof Skylights

**VCS** Solar-powered



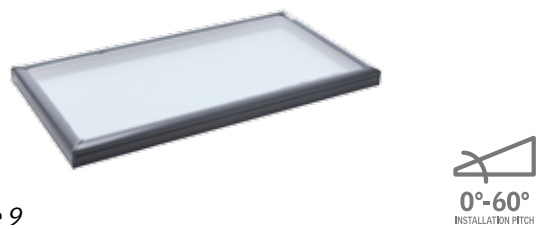
Page 5

**VCM** Manually operated



Page 7

**FCM** Fixed (non-opening)



Page 9

## Sun Tunnels and Roof Windows

**TWR** Rigid



Page 11

**TWF** Flexible

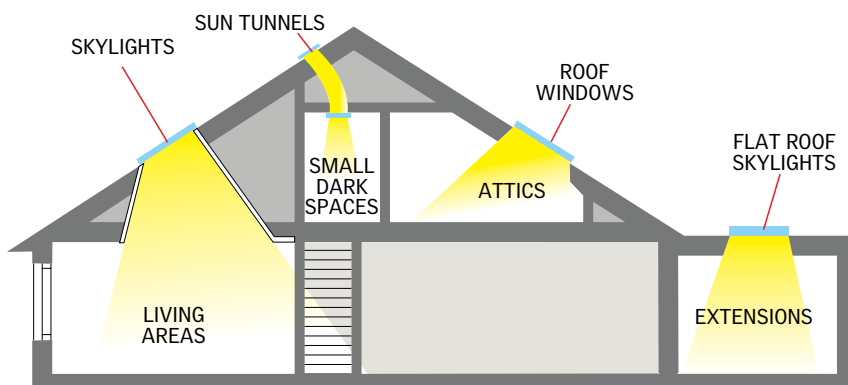


Page 11



**GGL**  
White  
pre-painted  
finish

Page 10



**GPL**  
White  
pre-painted  
finish

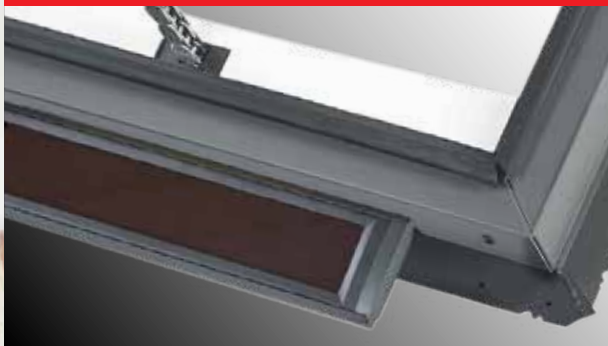
Page 10





# Automatic sensor-based ventilation\*

## Solar-Powered Skylights



- Solar panel mounted below the skylight provides all the power needed to operate the skylight.
- Rain sensor automatically closes skylight when rain is detected.
- Battery power negates power surges and blackouts.
- Easy to install, no need for electrical wiring.

\*Requires **VELUX ACTIVE**  
- sold separately (Page 5)



## Pitched Roofs



### VSS

#### Solar-powered skylight

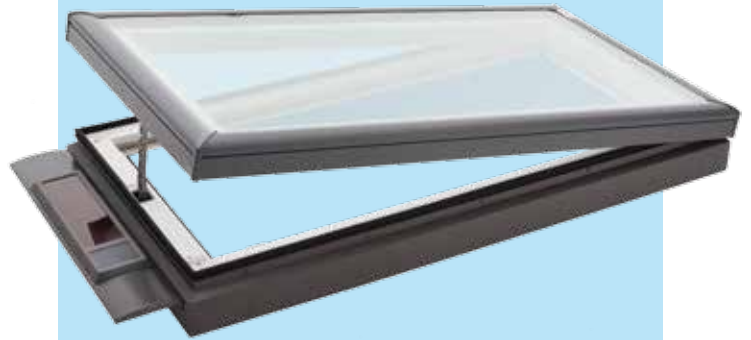
The VSS is the ultimate skylight that provides abundant daylight and controllable ventilation. Operated by a Radio Frequency wall-mounted keypad (included) and is powered by a concealed battery pack that is recharged by the external solar panel – allowing operation even when the sun isn't out.

- Electrician not required to install.
- White painted interior timber frame and sash.
- Smooth profile sits lower in the roof, does not obstruct the roofline.
- Available in 10 sizes.
- Rain sensor automatically closes the skylight when rain is detected.
- High Performance double glazing, with NEAT™ outer coating: reduces cleaning frequency.
- Includes removable insect screen.
- Complete with flashing for corrugated iron or tile roofs.

Technical Performance	
U-value†	
Skylight	2.50
Glass only	1.93
Solar Heat Gain Co-efficient†	
Skylight	0.21
Glass only	0.28
Heat block	
Approx	80%
Bushfire^	
BAL	40
Hailstone Test±	
VELUX Simulated Tests	ASTM E822-2009
WERS max 5 stars (summer rating)	
★★★★★	
Australian Standards	
AS4285	AS1288
AS3959^	AS1530.8.1††



## Flat Roofs



### VCS

#### Solar-powered skylight

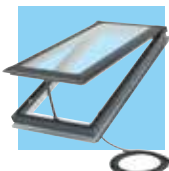
The VCS is the ultimate skylight that provides abundant daylight and controllable ventilation. Operated by a Radio Frequency wall-mounted keypad (included) and is powered by a concealed battery pack that is recharged by the external solar panel – allowing operation even when the sun isn't out.

- Electrician not required to install.
- Maintenance Free – White PVC interior frame for a tough, hard wearing interior finish.
- Available in 8 sizes.
- Rain sensor automatically closes the skylight when rain is detected.
- High Performance double glazing, with NEAT™ outer coating: reduces cleaning frequency.
- Includes removable insect screen.
- Requires custom-made flashing (not supplied by VELUX).

Technical Performance	
U-value†	
Skylight	2.9‡
Glass only	1.93
Solar Heat Gain Co-efficient†	
Skylight	0.24
Glass only	0.28
Heat block	
Approx	75%
Bushfire^	
BAL	40
Hailstone Test±	
VELUX Simulated Tests	ASTM E822-2009
WERS max 5 stars (summer rating)	
★★★★★	
Australian Standards	
AS4285#	AS1288
AS3959^	AS1530.8.1††



‡See installation preparation guide on page 9.



#### Also available

### VSE

#### Electrically operated



- Choice of 9 sizes.
  - 2 metre lead (supplied) plugs into power point.
  - White painted interior timber frame and sash.
  - Insect screen, rain sensor and wall-mounted keypad included.
- Visit [www.velux.com.au](http://www.velux.com.au) for more details.

#### VELUX ACTIVE indoor climate control (sold separately)

- **Sensor-based ventilation:** Smart sensors continuously monitor temperature, humidity and CO<sub>2</sub> levels and open or close your skylights accordingly.
- **Stay in control:** Use the app to operate your skylights and blinds using your smartphone.
- **VELUX Active** operates on 2.4GHz and is compatible with modern 'smart' modems. (select the 2.4GHz channel in dual mode on your modem).



### Solar Blinds

Honeycomb Blackout – FSCH (for VSS/VSE), FSCC (for VCS)

Blockout – DSH (for VSS/VSE)

- All blinds are available in white.
- Sold separately.
- Unique installation system allows easy installation.

\* For roofs below 15° pitch, VSS/VSE skylights need to be raised to 15° and custom flashed. VELUX can assist with technical advice and drawings. (NB: build-up not recommended in Bushfire areas.)

\*\* VELUX recommends VCS is installed with a slight pitch (e.g. 3°-5°) to help reduce condensation build-up and water ponding on the glass.

† U-value (W/m<sup>2</sup>K) and SHGC data based on AFRC simulations, (complete skylight size; VSS/VSE: 1140mm x 1180mm, VCS: 1275mm x 1275mm).

‡ Cyclone test not performed with screws provided, installation requires #8 roofing screws.

± Hailstone test not performed on solar panel. Solar panel not attached during test.

^ Skylight only. Custom-made flashing required. Skylight tested in closed position (VCS BAL assessed – based on VSS results), metal flywire mesh protection required for opening apertures (consult local council). Roof pitch; VSS: 18°-75°, VCS: 0°-60°. †† Assessed in closed position.



# Healthy daylight, fresh air and sky views



## Imagine the Possibilities

With the new VELUX Visualizer app, we've made it easier than ever to reimagine any room in your home. Using your device's built-in camera, this augmented reality app allows you to add, customize, and explore our skylight products in real time.

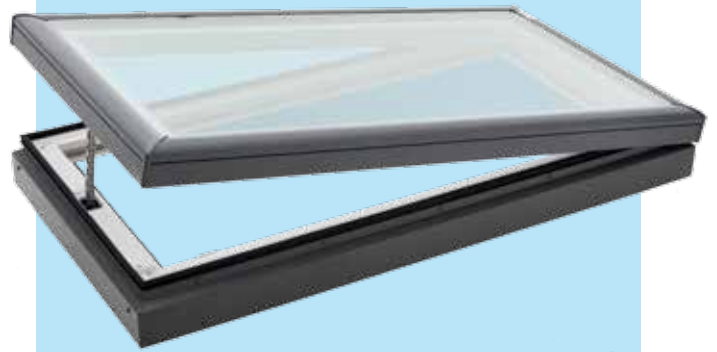




## Pitched Roofs



## Flat Roofs



## VS

### Manually operated

Suitable for pitched roofs, the VS manually operated skylight provides comfort and energy savings of free daylight and natural ventilation.

- White painted interior timber frame and sash.
- Outer aluminium cappings (grey).
- Smooth profile sits lower in the roof, does not obstruct the roofline.
- Available in 10 sizes.
- High Performance double glazing as standard; with NEAT™ outer coating: reduces cleaning frequency.
- Includes removable insect screen.
- Complete with flashing for corrugated iron or tile roofs.



#### Technical Performance

U-value†	
Skylight	2.50
Glass only	1.93

#### Solar Heat Gain Co-efficient†

Skylight	0.21
Glass only	0.28

#### Heat block

Approx 80%

#### Bushfire^

BAL40

#### Hailstone Test

VELUX Simulated Tests ASTM E822-2009

#### WERS max 5 stars (summer rating)



#### Australian Standards

AS4285 AS1288 AS3959^ AS1530.8.1††

## VCM

### Manually operated

Suitable for flat roofs, the VCM manually operated skylight provides comfort and energy savings of free daylight and natural ventilation.

- Maintenance free – White PVC interior frame for a tough interior finish.
- Outer aluminium cappings (grey).
- Available in 7 sizes.
- High Performance double glazing as standard; with NEAT™ outer coating: reduces cleaning frequency.
- Includes removable insect screen.
- Requires custom-made flashing (not supplied by VELUX).



#### Technical Performance

U-value†	
Skylight	2.9‡
Glass only	1.93

#### Solar Heat Gain Co-efficient†

Skylight	0.24
Glass only	0.28

#### Heat block

Approx 75%

#### Bushfire^

BAL40

#### Hailstone Test

VELUX Simulated Tests ASTM E822-2009

#### WERS max 5 stars (summer rating)

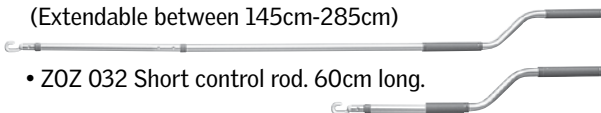


#### Australian Standards

AS4285# AS1288 AS3959^ AS1530.8.1††

#### Manual control options VS (sold separately)

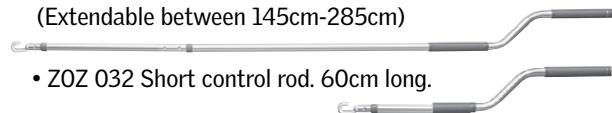
- ZZZ 201 Winder handle for in-reach operation.
- ZCT 300 Telescopic rod control. (Extendable between 145cm-285cm)



- ZOZ 032 Short control rod. 60cm long.

#### Manual control options VCM (sold separately)

- ZZZ 212 Winder handle for in-reach operation.
- ZCT 300 Telescopic rod control. (Extendable between 145cm-285cm)



- ZOZ 032 Short control rod. 60cm long.

## Solar Blinds for VS

### Honeycomb Blackout – FSCH Blockout – DSH

Includes wireless, wall-mounted keypad



- All blinds are available in white. • Sold separately.
- Unique installation system allows easy installation.

## Solar Blinds for VCM

### Honeycomb Blackout – FSCH

Includes wireless, wall-mounted keypad.



- All blinds are available in white. • Sold separately.
- Unique installation system allows easy installation.

\* For roofs below 15° pitch, VS needs to be raised to 15° and custom flashed. VELUX can assist with technical advice and drawings. (NB: build-up not recommended in Bushfire areas.)

\*\* VELUX recommends VCM is installed with a slight pitch (e.g. 3°-5°) to help reduce condensation build-up and water ponding on the glass.

† U-value (W/m²K) and SHGC data based on AFRC simulations, (complete skylight size; VS: 1140mm x 1180mm, VCM: 1275mm x 1275mm).

# VCM Cyclone test not performed with screws provided, installation requires #8 roofing screws. †† Assessed in closed position.

^ Custom-made flashing required. Skylight tested in closed position, metal flywire mesh protection required for opening apertures (consult local council). Roof pitch; VS: 18°-75°, VCM: 0°-60°.

NB: NCC Vol 1 & 2 regulations (Prevention of Falls from Windows – Balustrades & Barriers): contact VELUX for information relating to restrictor devices for within-reach opening skylights.



# Outstanding daylight provision where extra ventilation is not required

FCM skylights: Versatile double-glazed alternative to acrylic domes.



Old acrylic domes can be easily damaged.

FCM SKYLIGHTS ARE IDEAL REPLACEMENTS\*\* FOR ACRYLIC DOMES  
12 sizes available to replace common acrylic dome sizes.

In simulated tests\* VELUX skylights withstood hailstones, up to the size of cricket balls, launched at speeds experienced during heavy storms.



See Hail Storm case study.  
[www.velux.com.au](http://www.velux.com.au)

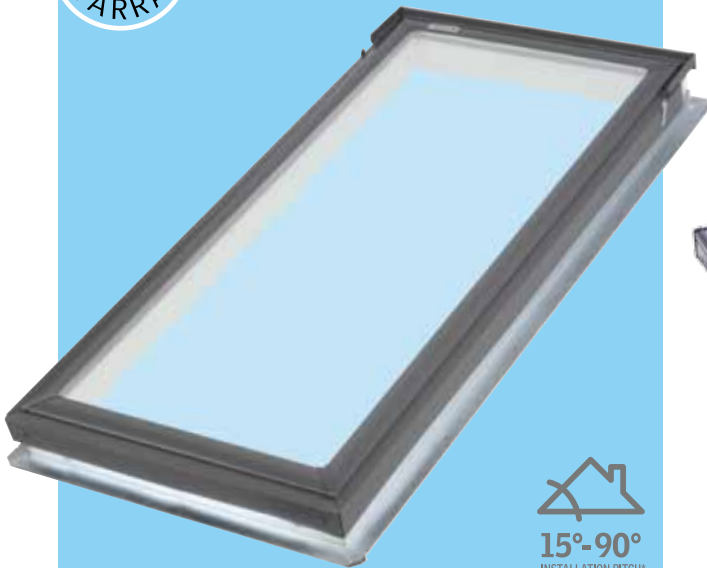
\*\* Custom-made collar adaptor (not supplied) required to fit.

\*ASTM E822-2009 standard practice for determining resistance of Solar Collector Covers to Hail impact with propelled ice balls.

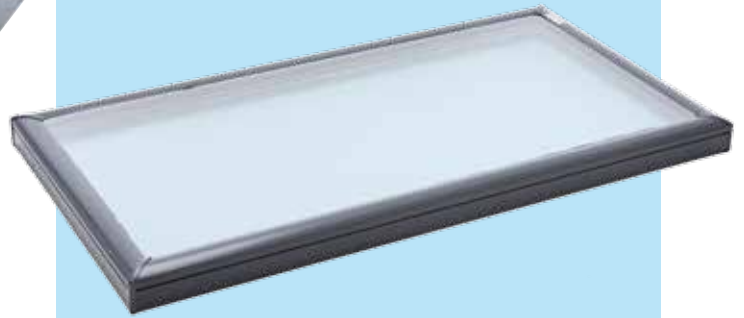




## Pitched Roofs



## Flat Roofs



### FS

#### Fixed (non opening)

Suitable for pitched roofs, the FS Skylight is the perfect solution for creating light filled rooms where added ventilation is not necessary. Energy efficient glazing and the use of blinds ensure heat transference is minimised.

- White painted interior timber frame.
- Outer aluminium cappings (grey).
- Complete with flashing for corrugated iron or tile roofs.
- High Performance double glazing as standard; with NEAT™ outer coating: reduces cleaning frequency.
- Smooth profile sits lower in the roof, does not obstruct the roofline.
- Available in 11 sizes.

Technical Performance	
U-value†	
Skylight	2.60
Glass only	1.93
Solar Heat Gain Co-efficient†	
Skylight	0.24
Glass only	0.28
Heat block	
Approx 75%	
Bushfire^	
BAL40	
Hailstone Test	
VELUX Simulated Tests ASTM E822-2009	
WERS max 5 stars (summer rating)	
★★★★★	
Australian Standards	
AS4285	AS1288
AS3959^	AS1530.8.1



### FCM

#### Fixed (non opening)

Suitable for flat roofs, the brilliantly simple FCM Skylight is a cost effective way to provide natural daylight to buildings with flat roofs. The High Performance double glazing provides excellent thermal insulation and has been tested for hail resistance.

- Unlike acrylic or polycarbonate – laminated glass will not fade nor discolour over time.
- The smooth exterior gives a lower profile on the roof.
- High Performance double glazing as standard; with NEAT™ outer coating: reduces cleaning frequency.
- Approx 99% UV Block.
- Available in 12 sizes.
- Requires custom-made flashing (not supplied by VELUX).
- Versatile positioning††: most sizes can be used in portrait, landscape or even "diamond shape" orientation.

Technical Performance	
U-value†	
Skylight	2.9‡
Glass only	1.93
Solar Heat Gain Co-efficient†	
Skylight	0.28
Glass only	0.28
Heat block	
Approx 70%	
Bushfire^	
BAL40	
Hailstone Test	
VELUX Simulated Tests ASTM E822-2009	
WERS max 5 stars (summer rating)	
★★★★★	
Australian Standards	
AS4285	AS1288
AS3959^	AS1530.8.1



### Blinds for FS

#### Manual Honeycomb Blackout – FHCD

requires ZXT 200 rod control for out-of-reach.



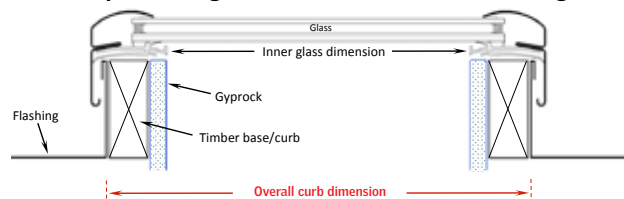
#### Solar Honeycomb Blackout – FSCD Solar Blackout – DSD

Includes wireless, wall-mounted keypad.



- All blinds are available in white.
- Sold separately.
- Unique installation system allows easy installation.

### Preparation guide for custom-made flashing



Note: If timber hob is greater than 38mm the Gyprock will encroach on the glazing area.

‡Skylight must be installed with timber hob and Gyprock, as shown (typical installation), to achieve 2.9 U-value rating.

\* For roofs below 15° pitch, FS needs to be raised to 15° and custom flashed. VELUX can assist with technical advice and drawings. (NB: build-up not recommended in Bushfire areas.)

\*\* VELUX recommends FCM is installed with a slight pitch (e.g. 3°-5°) to help reduce condensation build-up and water ponding on the glass.

† U-value (W/m²K) and SHGC data based on AFRC simulations, (complete skylight size; FS: 1140mm x 1180mm, FCM: 1275mm x 1275mm) .

^ Skylight only. Custom-made flashing required. Roof pitch; FS: 18°-75°, FCM: 0°-60°.

†† FCM 2270 not recommended for "landscape" orientation.



## For Attic Conversions



for within-reach only



15°-90°  
INSTALLATION PITCH\*

## GGL

### Centre-Pivot roof window



Beautifully engineered for a lifetime of use, the GGL is ideal for within-reach attic situations.

- A short pull on the top control bar allows filtered background ventilation even while the window remains shut.
- A second pull on the control bar allows the window to rotate for maximum ventilation – and up to 180° for cleaning the outer pane from inside the room.
- Quality white painted pine sash & frame.
- Complete with flashing for corrugated iron or tile roofs.
- Available in 5 sizes.
- Laminated double glazing as standard.

Technical Performance	
U-value†	
Roof Window	1.30
Glass only	1.00
Solar Heat Gain Co-efficient†	
Skylight	0.31
Glass only	0.30
Heat block	
Approx 70%	
UV Harmful Rays Block	
Approx 95%	
WERS max 5 stars (summer rating)	
★★★★★	
Australian Standards	
AS4285	AS1288



## For Attic Conversions



for within-reach only



15°-55°  
INSTALLATION PITCH\*

## GPL

### Dual action roof window



Developed for use in attics with shallower pitched roofs to maximise roof top views. For within-reach situations only.

- Opens in two ways: the bottom handle allows for top-hung opening; a short pull on the top control bar allows filtered background ventilation even while the window remains shut.
- A second pull on the control bar allows the window to rotate for maximum ventilation – and up to 180° for cleaning the outer pane from inside the room.
- Quality white painted pine sash & frame.
- Complete with flashing for corrugated iron or tile roofs.
- Available in 5 sizes.
- Laminated double glazing as standard.
- Insect screen available as extra.

Technical Performance	
U-value†	
Roof Window	1.30
Glass only	1.00
Solar Heat Gain Co-efficient†	
Skylight	0.31
Glass only	0.30
Heat block	
Approx 70%	
UV Harmful Rays Block	
Approx 95%	
WERS max 5 stars (summer rating)	
★★★★★	
Australian Standards	
AS4285†	AS1288

## Blinds for GGL/GPL

Manual Honeycomb Blackout – FHC    Manual Blackout – DKL

- All blinds available in white • Unique installation system allows easy installation • Sold separately

## Opening Restrictors

NCC Vol 1 & 2 regulations (Prevention of Falls from Windows – Balustrades & Barriers): contact VELUX for information relating to restrictor devices for within-reach opening roof windows.

\* For roofs below 15° pitch, roof windows need to be raised to 15° and custom flashed. VELUX can assist with technical advice and drawings.

† U-value (W/m²K) and SHGC calculated according to EN 14351-1:2006 + A2:2016 (window size 1140mm x 1400mm).

‡ Except Cyclonic.



(TWR pictured)



# Sun Tunnels



## Time-saving design

The VELUX Sun Tunnel has been designed to make installation quick and easy. Tube assembly is simple so little time is spent in the roof cavity.

The VELUX rigid (TWR) and flexible (TWF) Sun Tunnels provide installation flexibility. Rigid tunnels are most suited to roof spaces with minimal obstructions. They have a highly reflective shaft to achieve maximum light output. Flexible tunnels can be used when obstructions in the roof cavity prevent the use of rigid Sun Tunnels.

VELUX Sun Tunnels for pitched roofs are designed to provide natural light into corridors, stairwells, powder rooms and cupboards; where installation of a VELUX Skylight is not possible.



**CORRIDORS, STAIRWELLS AND POWDER ROOMS**

**AFTER**

**BEFORE**

**DAYLIGHT WHERE YOU WANT**

**Product features:**

- Choice of highly reflective rigid or flexible tunnel (350mm diameter, lengths vary – details on page 15).
- 4mm toughened external glass.
- Dual-layered ceiling diffuser – spreads light over an area of up to 9m<sup>2</sup>.
- Interior diffuser with 'Edge Glow', a clear ring on the diffuser's edge.
- Outer polyurethane cappings with integrated flashings for tiled/corrugated iron roofs.
- 'Stay clean' coating on glass exterior reduces cleaning frequency.
- Easier and quicker to install with VELUX Flexi Loc system. (TWR).

TWR
Technical Performance
Bushfire <sup>^</sup>
BAL29
Australian Standards
AS4285 (Except cyclonic)
AS3959 <sup>^</sup>

NB: For best performance VELUX recommends TWR for shafts over 1m.  
 \* Sun Tunnels are not suitable for roof pitches below 15°.   
<sup>^</sup> Bushfire testing applicable to roof pitches 18°-60°. TWR only.

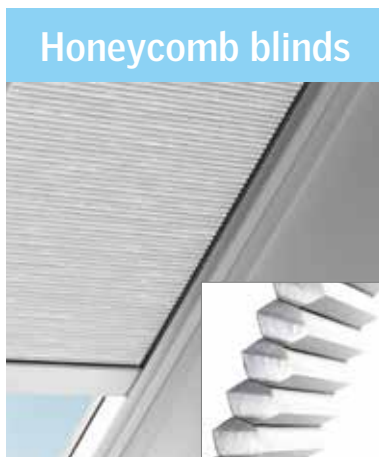




## VELUX Blinds – effective light control

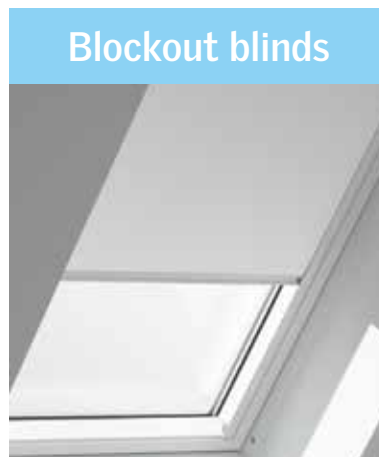


VELUX has a choice of blinds that provide different levels of light control. Tailor-made to fit perfectly to each size of skylight or roof window, they are easy to install and are supplied with white powder-coated side channels that allow the blind to be positioned at any point down the window.



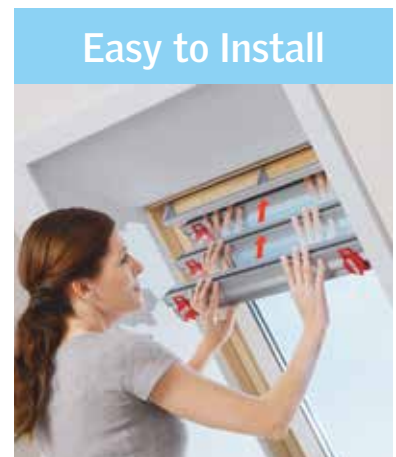
A stylish and modern blind providing protection from heat and glare while providing a near complete blockout from light.

- Honeycomb structured material.
- Near-total light reduction.
- Reduce heat by approx 70%\*.
- Available in white only.
- White rails and body.



Provide near complete blockout from light.

- Blind can be stopped at any position on the window.
- Near-total light reduction.
- Reduce heat by approx 40%\*.
- Available in white only.
- White rails and body.



Unique installation system makes installing our blinds a snap!

Installation is simple if window is within easy reach.

### Blind options

Blind to fit	Manual Honeycomb Blackout	Manual Blockout	Solar Honeycomb Blackout**	Solar Blockout**
FS	✓ <sup>^</sup>		✓	✓
VS			✓	✓
VSS/E			✓	✓
VCS			✓	
VCM			✓	
GGL	✓ <sup>†</sup>	✓		
GPL	✓ <sup>†</sup>	✓		

<sup>^</sup> Manual Blinds for Fixed Skylights require ZXT 200 rod control for out-of-reach situations (Sold separately).

\*\*Solar blinds include wireless wall-mounted keypad (KLI 312).

Contact VELUX for information on blinds for FCM.

**NB: Blinds can be retrofitted to skylight after installation (FCM skylights require additional Accessory tray to be used to fit blinds).**

**Please note: New VELUX blinds do not fit older VELUX products. Contact VELUX to check availability of suitable blinds.**

\* Based on VELUX internal testing with 3076 model roof window.

NB: VELUX recommends retracting blinds during windy conditions if skylight is open.



# Precision-made Flashings

## Safe, effective rainwater drainage

The unique construction of VELUX flashings ensures safe drainage of rainwater coming from the roof above the window. Because the roofing material covers both top and sides, VELUX flashings are largely unobtrusive. To harmonise even further with the roofing material, they are available in standard grey aluminium.



### EDW flashing – for metal or tile roofing. e.g. corrugate, tile

- Flashing for single skylight or roof window.
- Designed for roof pitches from 15° to 90°. For roofs below 15° create pitch-up and use custom made flashing (not supplied by VELUX).

## VELUX Combination Flashing

for metal or tile roofing. e.g. corrugate, tile

Side by Side



Above – Below



Multi (4+)



VELUX skylights can be coupled together using 'combi' flashing in a variety of configurations to add truly inspiring features to any room of the house.

When installing skylights with 'combi' flashing, skylights must be installed with a strict 100mm space between each skylight. See back page for information on 'combi' flashing product codes.

Contact VELUX when installing VSS above/below combination due to positioning of solar-panel.

NB: New VELUX flashings do not fit older VELUX products. Contact VELUX for information and pricing. RRP does not include combination flashing, contact VELUX for information regarding price of combination flashing.



### Custom flashing – All other situations

- Required for flat roof skylight installations.
- Useful for situations where VELUX flashing isn't suitable. Such as bushfire areas, or when installing in a roof outside the installation pitch range (pitch adaptor), or when colour matching to roof is preferable.
- Not supplied by VELUX, contact VELUX for more information on custom flashing.

## Opening Skylights (pitched roofs)



Overall frame dimension w x h mm ▶ 550 x 700 550 x 980 550 x 1180 550 x 1400 780 x 780 780 x 980 780 x 1180 780 x 1400 1140 x 700 1140 x 1180

### Manual Page 7

Size code ▶ C01 C04 C06 C08 M02 M04 M06 M08 S01 S06

VS High Performance double glazing (RRP) \$ 954 973 1,034 1,088 1,095 1,138 1,236 1,333 1,200 1,486

Package includes: Flashing for single skylight<sup>†</sup> in corrugated iron or tile roof (not suitable for metal profiles such as Klip-Lok, Trimdek), insect screen and operating hook. NB: Operating Rod (ZCT 300, ZOZ 032) for out-of-reach operation and winder handle (ZZZ 201 for within-reach operation) to be purchased separately.

### Solar/Electric Page 5

Size code ▶ C01 C04 C06 C08 M02 M04 M06 M08 S01 S06

VSS (Solar) High Performance double glazing (RRP) \$ 2,231 2,260 2,319 2,379 2,378 2,431 2,535 2,640 2,518 2,799

VSE (Electric) High Performance double glazing (RRP) \$ 2,076 2,103 2,158 2,213 - 2,263 2,359 2,456 2,344 2,605

Package includes: Flashing for single skylight<sup>†</sup> in corrugated iron or tile roof (not suitable for metal profiles such as Klip-Lok, Trimdek), insect screen, pre installed motor, wall-mounted keypad and rain sensor, solar panel included with VSS.

### Blinds<sup>††</sup> (vs, VSS & VSE)

Size code ▶ C01 C04 C06 C08 M02 M04 M06 M08 S01 S06

FSCH Solar Honeycomb Blackout<sup>^</sup> (RRP) \$ 520 520 520 520 531 531 531 531 542 542

DSH Solar Blackout<sup>^</sup> (RRP) \$ 520 520 520 520 531 531 531 531 542 542

## Fixed Skylights (pitched roofs)



Overall frame dimension w x h mm ▶ 550 x 700 550 x 980 550 x 1180 550 x 1400 550 x 1800 780 x 780 780 x 980 780 x 1180 780 x 1400 1140 x 700 1140 x 1180

\* Available from 1st September

NEW

### Fixed Page 9

Size code ▶ C01 C04 C06 C08 C12 M02 M04 M06 M08 S01 S06

FS High Performance double glazing (RRP) \$ 542 615 694 769 1071 723 757 846 936 830 972

Package includes: Flashing for single skylight<sup>†</sup> in corrugated iron or tile roof (not suitable for metal profiles such as Klip-Lok, Trimdek).

### Blinds<sup>††</sup> (FS)

Size code ▶ C01 C04 C06 C08 C12 M02 M04 M06 M08 S01 S06

FHCD Manual Honeycomb Blackout<sup>\*\*</sup> (RRP) \$ 190 207 218 228 - 218 218 239 255 228 272

FSCD Solar Honeycomb Blackout<sup>^</sup> (RRP) \$ 520 520 520 520 650 531 531 531 531 542 542

DSD Solar Blackout<sup>^</sup> (RRP) \$ 520 520 520 520 - 531 531 531 531 542 542

## Opening Roof Windows

Recommended for within-reach situations only



Overall frame dimension w x h mm ▶ 550 x 780 550 x 980 780 x 980 780 x 1180 780 x 1400 1140 x 1180

### Manual Page 10

Size code ▶ CK02 CK04 MK04 MK06 MK08 SK06

GGL Centre-pivot, Laminated double glazing (RRP) \$ 755 805 942 - 1,133 1,379

GPL Dual action, Laminated double glazing (RRP) \$ - 892 1,022 1,120 1,252 1,445

Package includes: Flashing for single window<sup>†</sup> in corrugated iron or tile roof (not suitable for metal profiles such as Klip-Lok, Trimdek).

ZIL Insect Screens (For GPL) (RRP) \$ 268 268 330 330 330 367

ZIL Insect Screen is fitted to ceiling to cover plaster reveal. Suitable for within-reach applications only. NB: side channel length to be cut to size.

### Blinds<sup>††</sup> (GGL, GPL)

Size code ▶ CK02 CK04 MK04 MK06 MK08 SK06

FHC Manual Honeycomb Blackout (RRP) \$ 194 208 215 229 251 268

DKL Manual Blackout (RRP) \$ 194 208 215 229 251 268

†† NEW VELUX blinds and flashings do not fit older VELUX products. Contact VELUX to check availability of suitable blinds and flashings.

\* For roofs below 15° pitch, skylights and roof windows need to be raised to 15° and custom flashed. VELUX can assist with technical advice and drawings.

\*\*Requires ZXT 200 control rod for out-of-reach situations (sold separately). NB: VELUX recommends Solar Blinds for exceptionally high situations.

<sup>^</sup>Wireless wall-mounted keypad supplied.

<sup>†</sup> For multiple skylights/roof windows installed side by side, contact VELUX for information and pricing on combination flashing.

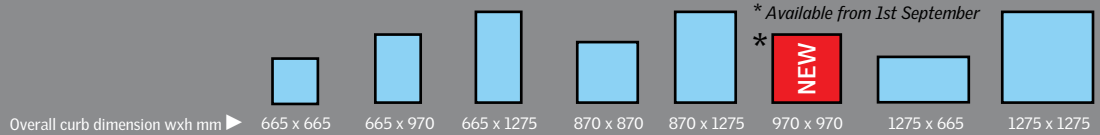
NB: Skylights and roof windows can only be installed as per orientation depicted above.

Delivery time (in working days)# NSW 1-2 VIC 1-2 SA 3 ACT 1-2 QLD 2-5 NT 3-7 TAS 3-5 WA 1-2<sup>§</sup>

# Metropolitan areas only. Subject to order being received by VELUX before 12 EST noon. Add extra working day to delivery time for orders received by VELUX after 12 EST noon. § Subject to availability at Perth warehouse.



## Opening Skylights (flat roofs)



<b>Manual</b> <i>Page 7</i>	Size code ▶	2222	2234	2246	3030	3046	3434	4622	4646
-----------------------------	-------------	------	------	------	------	------	------	------	------

VCM High Performance double glazing	(RRP) \$	946	1,022	1,129	1,183	1,285	1235	-	1,506
-------------------------------------	----------	-----	-------	-------	-------	-------	------	---	-------

Package includes: Insect screen and operating hook. Custom flashings are required for VCM (not provided) – VELUX can assist with technical advice and drawings.  
 NB: Operating Rod (ZCT 300, ZOZ 032) for out-of-reach operation and winder handle (ZZZ 212 for within-reach operation) to be purchased separately.  
 NB: VCM can only be installed as per orientation depicted above.

<b>Solar</b> <i>Page 5</i>	Size code ▶	2222	2234	2246	3030	3046	3434	4622	4646
----------------------------	-------------	------	------	------	------	------	------	------	------

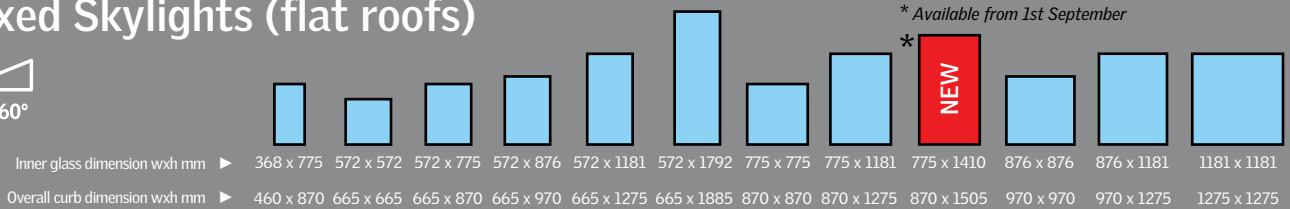
VCS High Performance double glazing	(RRP) \$	2,176	2,301	2,452	2,460	2,581	2515	2,468	2,704
-------------------------------------	----------	-------	-------	-------	-------	-------	------	-------	-------

Package includes: Insect screen, pre installed motor, wall-mounted keypad, rain sensor and solar panel.  
 Custom flashings are required for VCS (not provided) – VELUX can assist with technical advice and drawings.  
 NB: VCS can only be installed as per orientation depicted above.

<b>Blinds (VCM/VCS)</b>	Size code ▶	2222	2234	2246	3030	3046	3434	4622	4646
-------------------------	-------------	------	------	------	------	------	------	------	------

FSCC Solar Honeycomb Blackout, Wireless wall-mounted keypad supplied	(RRP) \$	520	520	520	531	531	542	574	574
--	----------	-----	-----	-----	-----	-----	-----	-----	-----

## Fixed Skylights (flat roofs)

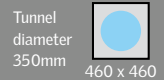


<b>Fixed</b> <i>Page 9</i>	Size code ▶	1430	2222	2230	2234	2246	2270	3030	3046	3055	3434	3446	4646
----------------------------	-------------	------	------	------	------	------	------	------	------	------	------	------	------

FCM High Performance double glazing	(RRP) \$	290	315	342	363	411	741	398	506	616	452	533	560
-------------------------------------	----------	-----	-----	-----	-----	-----	-----	-----	-----	-----	-----	-----	-----

NB: FCM can be positioned in portrait or landscape (FCM 2270 not recommended for landscape orientation).  
 Custom flashings are required for FCM (not provided) – VELUX can assist with technical advice and drawings. Contact VELUX for information on blinds for FCM.

## Sun Tunnels *Page 11*



TWF 0K14	Sun Tunnel with <b>flexible</b> shaft – 2200mm long, 350mm diameter	(RRP) \$	363
TWR 0K14	Sun Tunnel with <b>rigid</b> shaft – 1650mm long, 350mm diameter	(RRP) \$	604
ZTR 0K14	<b>Rigid</b> extension – 1240mm (NOT suitable for TWF)	(RRP) \$	240

Package complete with integrated flashing for tiled or corrugated iron roofs (not suitable for metal profiles such as Klip-Lok, Trimdek), tunnel and ceiling diffuser.  
 Sun Tunnels are not suitable for roof pitches below 15°.

## Electric and Rod Controls

ZZZ 201	Winder handle (white) to operate VS openable skylights within reach	(RRP) \$	45
ZZZ 212	Winder handle (white) to operate VCM openable skylights within reach	(RRP) \$	45
ZOZ 032	Short rod control (60cm) to operate within reach, manual openable skylights	(RRP) \$	55
ZCT 300	Extendable rod control to operate manual openable skylights. 145cm – 285cm length	(RRP) \$	76
ZXT 200	Extendable rod control to operate manual fixed skylight blinds. 100cm – 180cm length	(RRP) \$	65
KIX 300	VELUX ACTIVE starter kit – includes 1 x internet gateway, 1 x climate sensor, 1 x departure switch	(RRP) \$	517
KLA 300	VELUX ACTIVE indoor climate sensor Additional climate sensors recommended if multiple rooms contain opening skylights	(RRP) \$	231
KLF 200	Interface Unit. Connect to building managements systems, sensors and switches Individual control of 5 products (or groups), up to 200 products in total	(RRP) \$	627

Delivery time (in working days)#	NSW 1-2	VIC 1-2	SA 3	ACT 1-2	QLD 2-5	NT 3-7	TAS 3-5	WA 1-2 <sup>§</sup>
----------------------------------	---------	---------	------	---------	---------	--------	---------	---------------------

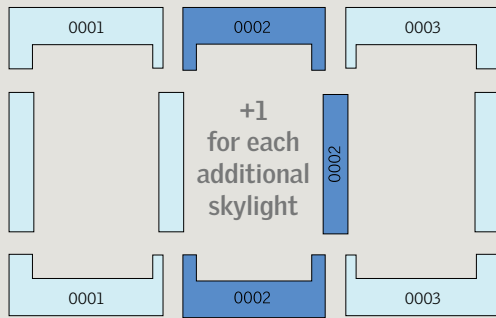
# Metropolitan areas only. Subject to order being received by VELUX before 12 EST noon. Add extra working day to delivery time for orders received by VELUX after 12 EST noon.  
 § Subject to availability at Perth warehouse.

Price list effective July 2022. All prices are supply only and include GST. Prices subject to change without notice. All prices quoted are Recommended Retail Prices (RRP) only.

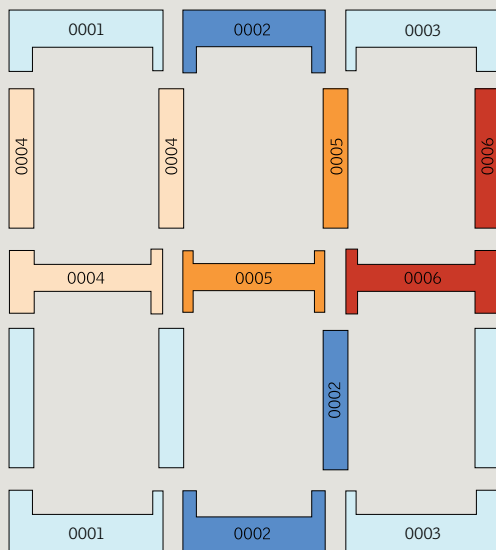
# EKW Combination Flashing

Use when combining multiple pitched roof skylights\* together

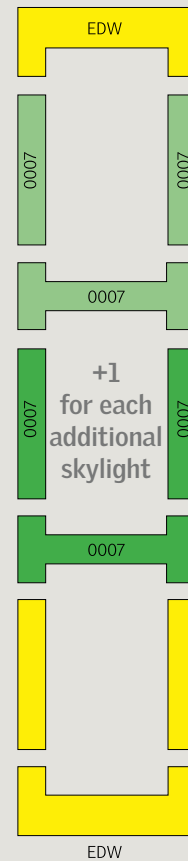
## Side by Side



## Multi (4+)



## Above - Below



Select your skylight configuration and note the flashing components required.

Combi Product Code: EKW SIZE 000X

Example: 3 skylights side-by-side require 0001, 0002, 0003 components.

Codes become EKW M04 0001, EKW M04 0002, EKW M04 0003

\* Not suitable for flat roof skylights.

VELUX Australia Pty Ltd  
78 Henderson Road, Alexandria NSW 2015

Customer Services: Tel: 1300 859 856

E-mail: [customer.service@velux.com.au](mailto:customer.service@velux.com.au)

@veluxaustralia

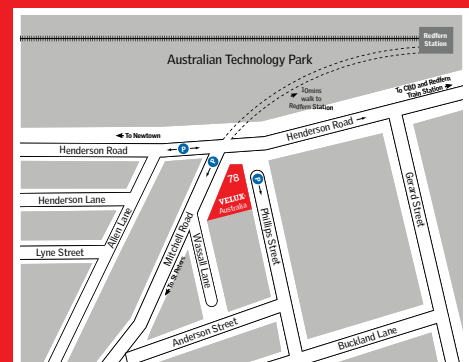
[www.velux.com.au](http://www.velux.com.au)

**VELUX**<sup>®</sup>

## SYDNEY HEAD OFFICE & SHOWROOM

Showroom may be closed due to the COVID-19 situation.

Please call before visiting.



## OPENING TIMES:

Sydney Head Office: 8am-5pm (Mon-Fri)

Showroom: 8.30am-4.30pm (Mon-Fri)